

WELCOME

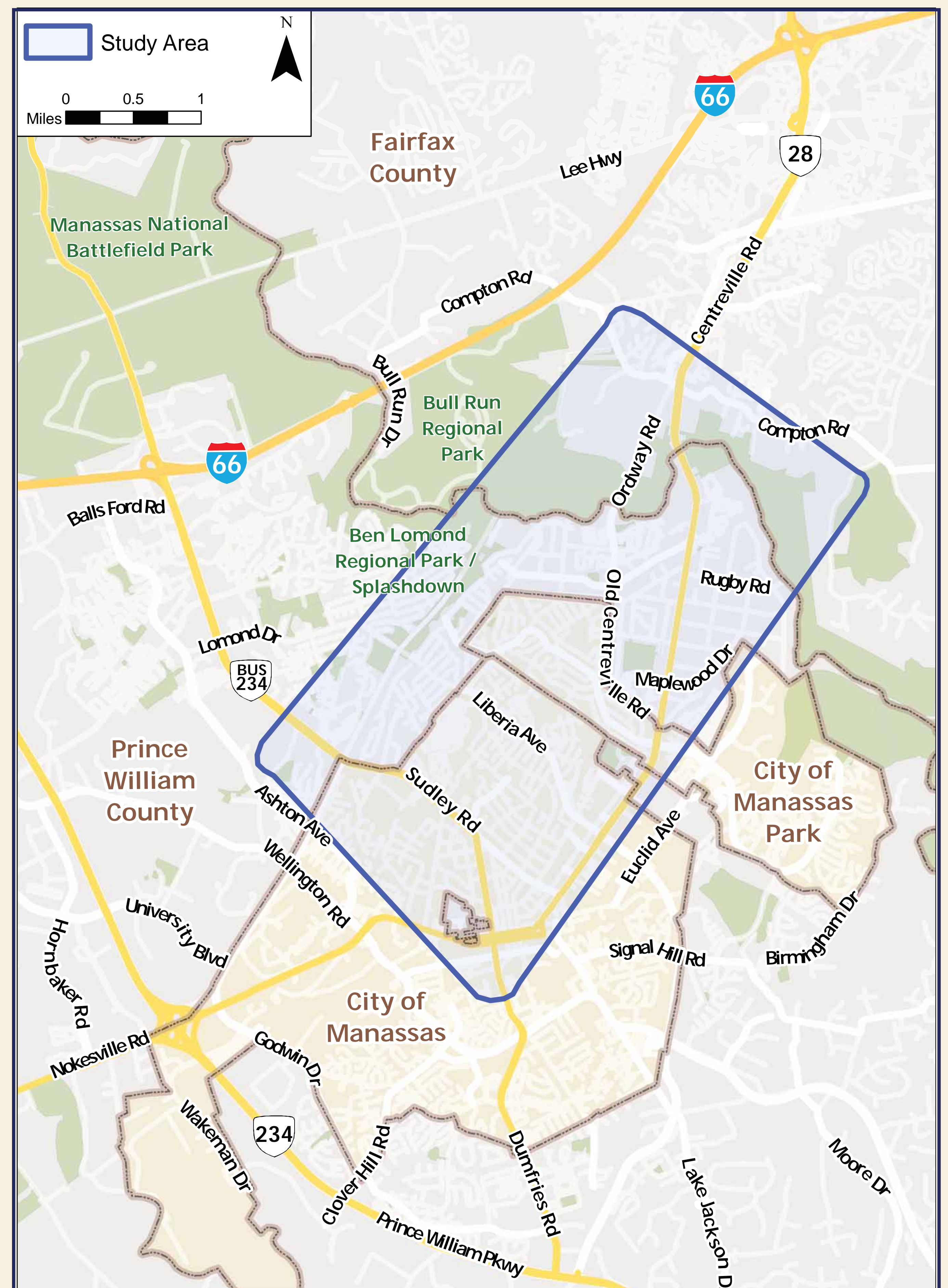
Thank you for attending tonight's Public Information Meeting for the Route 28 Corridor Environmental Assessment (EA). Prince William County is preparing the EA to evaluate the potential social, economic, and environmental effects associated with proposed improvements in the Route 28 corridor between the City of Manassas and Fairfax County.

Tonight is your opportunity to:

- Hear about project activities since the last public meeting in December 2018.
- Provide suggestions and comments on the project alternatives.
- Tell us what issues, environmental resources, or other factors are important to you and should receive consideration in the study.

Please take the time to examine the information provided, ask as many questions as you wish, and give us your comments and suggestions. Your input is needed as part of the environmental review process and it is important.

All comments received will be reviewed and considered by the project study team.

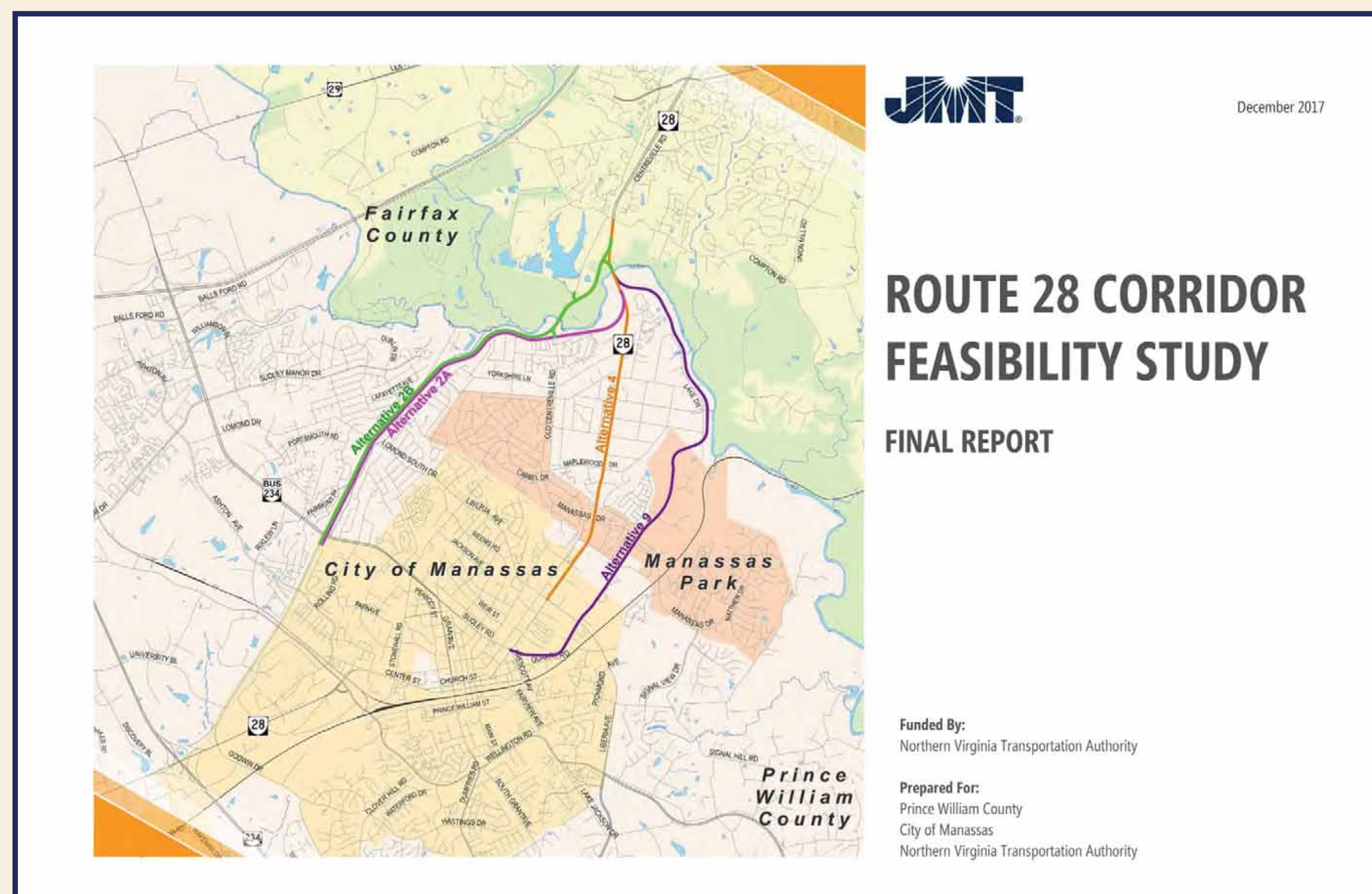


THANK YOU FOR ATTENDING!

BACKGROUND

ROUTE 28 CORRIDOR FEASIBILITY STUDY, 2017

- Ten preliminary alternatives, including alternative concepts proposed in the past by elected officials, local transportation staff, or citizens.
- Two sets of screening to assess the alternatives using evaluation criteria related to traffic, policy considerations, environmental and socioeconomic/right-of-way impacts, and planning-level costs.
- Four of the ten alternatives advanced to the second level of screening based on their ability to meet the key objectives of the study and improve traffic operations on existing Route 28, and they were ranked in the following order: 2B, 2A, 4, and 9.
- Alternatives 2A, 2B, and 4 are being carried forward in the Environmental Assessment. Alternative 9, which was ranked lowest of the four alternatives, has been dropped from consideration.



Route 28 Corridor Environmental Assessment

In addition to funding the Route 28 Corridor Feasibility Study (above), the Northern Virginia Transportation Authority (NVTa) is also funding the preparation of the Environmental Assessment. Below is a summary of the funds that NVTa has allocated and programmed for the Route 28 corridor:

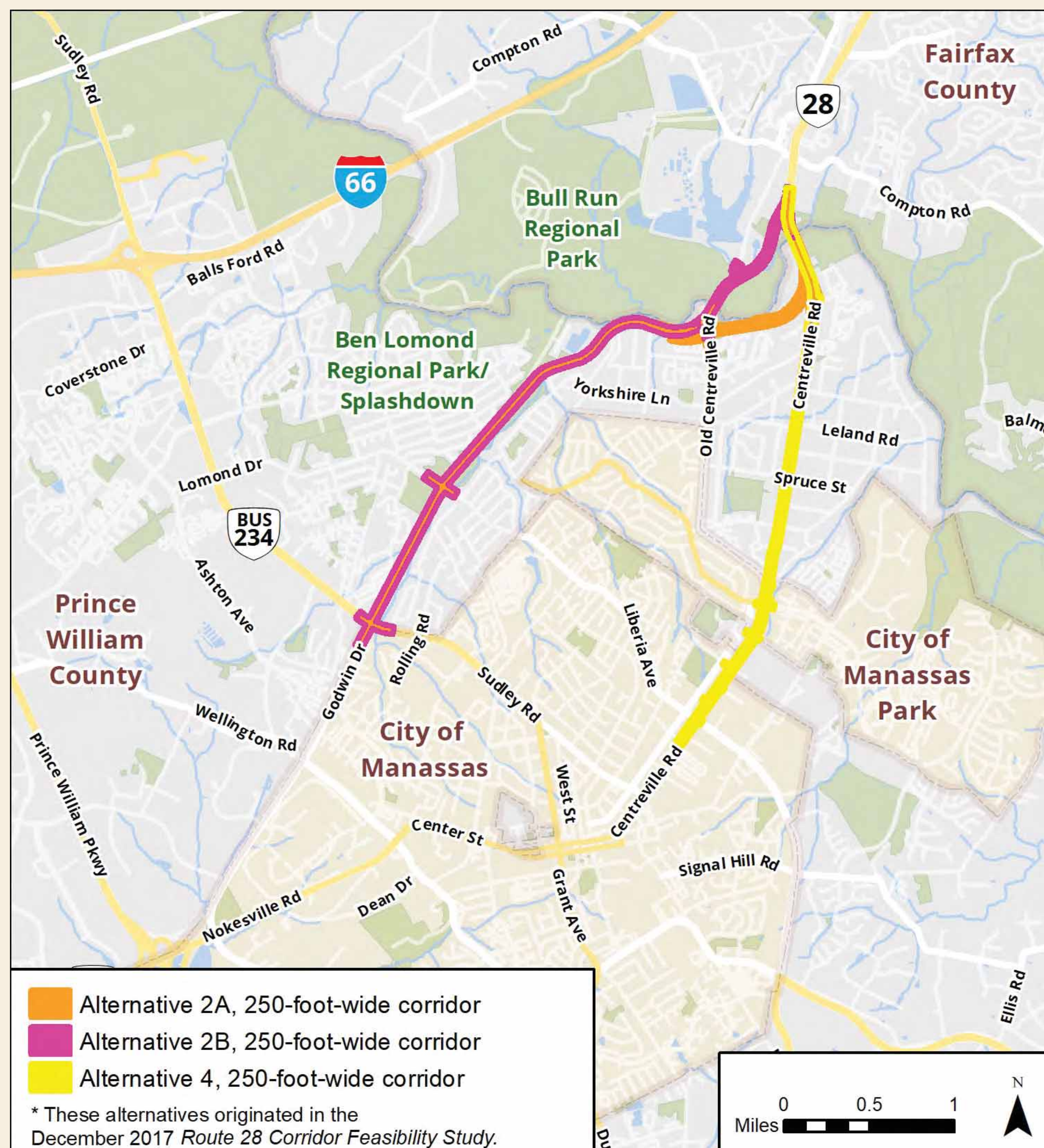
- Route 28 Congestion Study – Godwin Drive Extension Alternative: \$2,500,000 (FY2015-16 Two Year Program)
- Route 28 Corridor Feasibility Study – City of Manassas to Fairfax County: \$3,500,000 (FY2018-2023 Six Year Program)
- Construction of Route 28 Corridor Roadway Improvements: \$89,000,000 (FY2018-2023 Six Year Program)

GOAL OF THE PROJECT

- The goal of this project is to reduce congestion and improve travel times and network reliability in the Route 28 corridor between the City of Manassas and Fairfax County.

PROJECT ALTERNATIVES

- Alternative 2A would be on new alignment and extend Godwin Drive north from the existing Godwin Drive/Sudley Road intersection, parallel Flat Branch, turn east following the south side of Bull Run until joining existing Route 28, then continue along existing Route 28 to the southern terminus of Fairfax County's Route 28 widening project north of Bull Run.
- Alternative 2B would be on new alignment and extend Godwin Drive north from the existing Godwin Drive/Sudley Road intersection, parallel Flat Branch, then turn east following the south side of Bull Run until Old Centreville Road where it would cross Bull Run at the existing crossing of Old Centreville Road and join existing Route 28 north of Bull Run.
- Alternative 4 would widen Route 28 on existing alignment between Liberia Avenue and the southern terminus of Fairfax County's Route 28 widening project north of Bull Run.

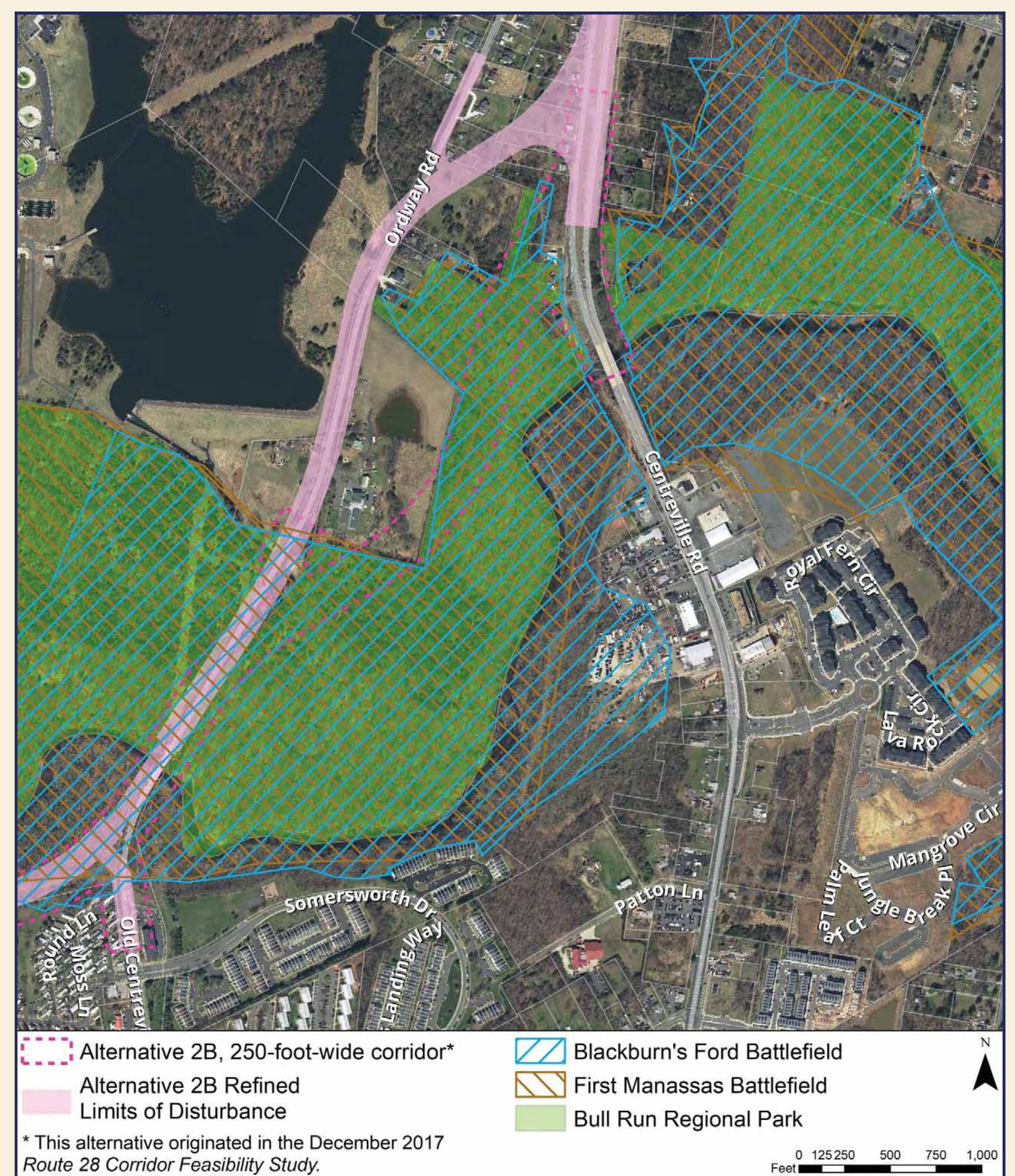


ALTERNATIVES REFINEMENT

The alternatives analysis in the 2017 Route 28 Corridor Feasibility Study was based on study corridors that were 250 feet wide. The 250-foot-wide study corridors were wider than the expected actual footprint of the roadway and right-of-way to allow flexibility in later alternatives refinement and design.

Efforts have now been made to refine the alternatives carried forward for detailed analysis in the EA. These efforts include adjustments to the alignments of the alternatives to reduce encroachments into parks, historic properties, neighborhoods, floodplains, and wetlands. They also include development of an estimated footprint to accommodate the roadway as well as provide space for construction and utilities. Specific examples of refinements include:

- Alternative 2A: alignment shifted south to avoid the historic property along Bull Run.
- Alternative 2B: north end of alignment shifted north and west to follow Ordway Road farther north before turning east to join Route 28 south of Compton Road, thereby avoiding a portion of Bull Run Regional Park and historic battlefield land.

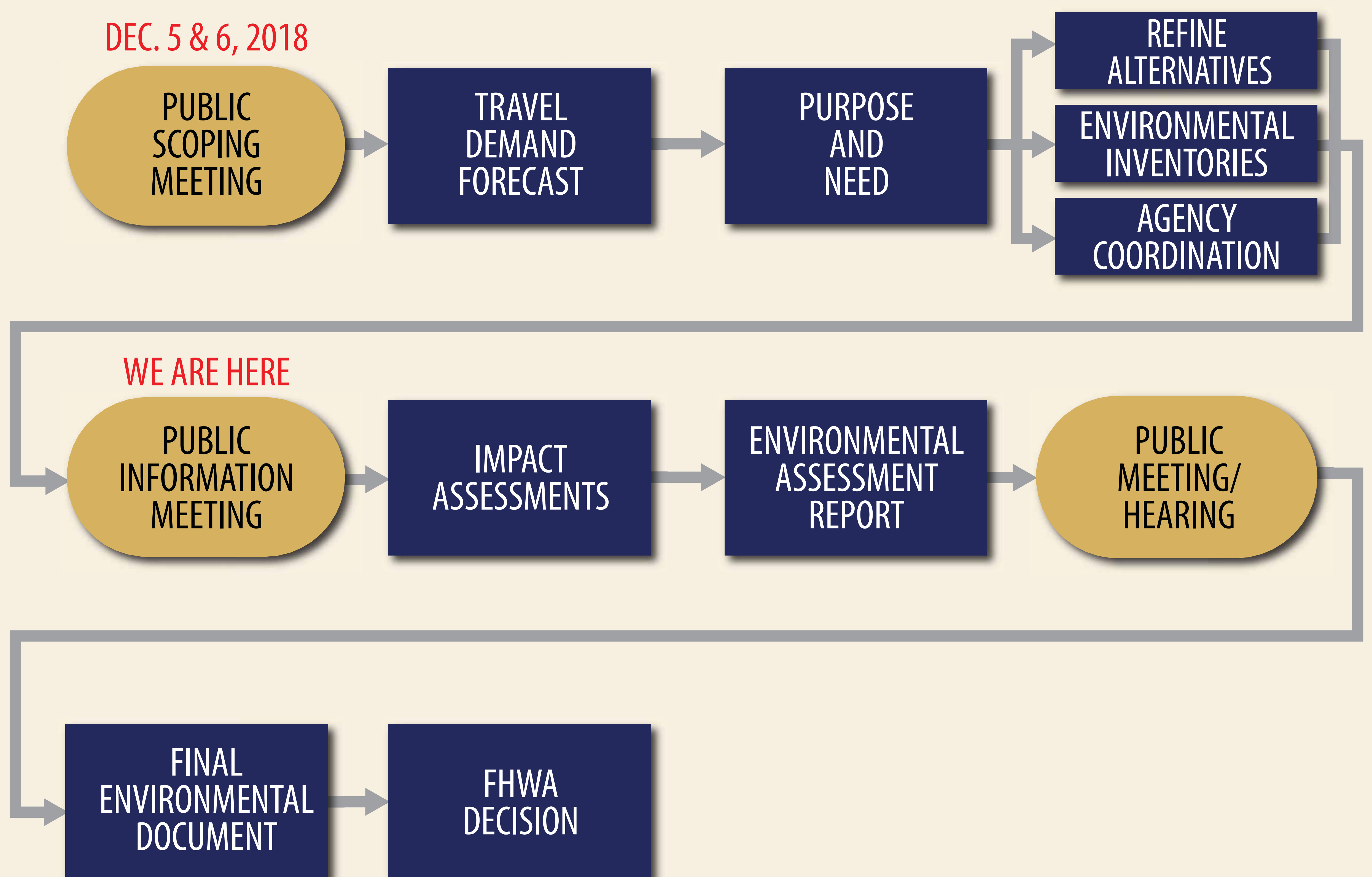


ENVIRONMENTAL REVIEWS

The National Environmental Policy Act (NEPA) requires consideration of potential environmental consequences of federally funded transportation improvements, documentation of the analyses, and making the information available to the public for comment before implementation.

Tonight's meeting is an opportunity to gather public input on the three alternatives that are being studied in the Environmental Assessment (EA) and to obtain feedback on the refinements that have been made to the alignments originally developed in the 2017 Route 28 Corridor Feasibility Study.

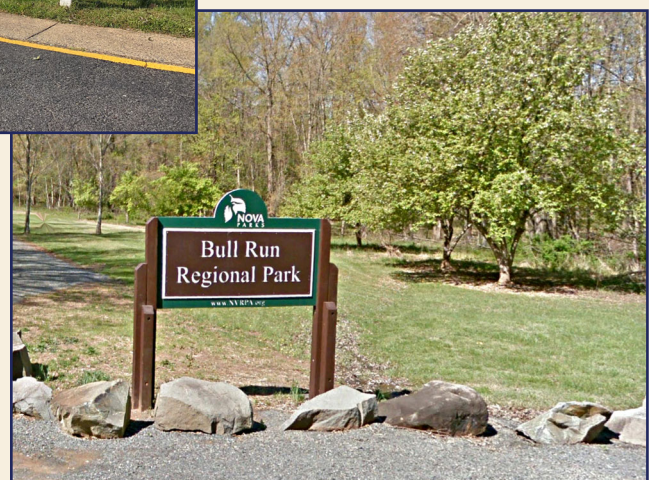
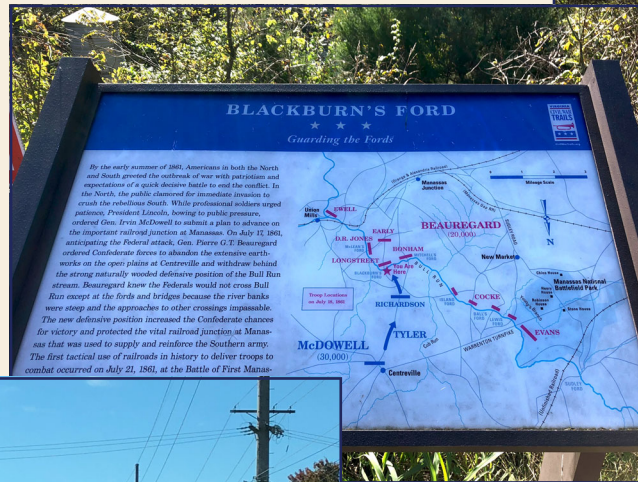
There will be a public hearing at the completion of the study for public review and comment on the impacts assessments and EA document.



ENVIRONMENTAL CONSIDERATIONS

Resources/issues to be considered in the Environmental Assessment include:

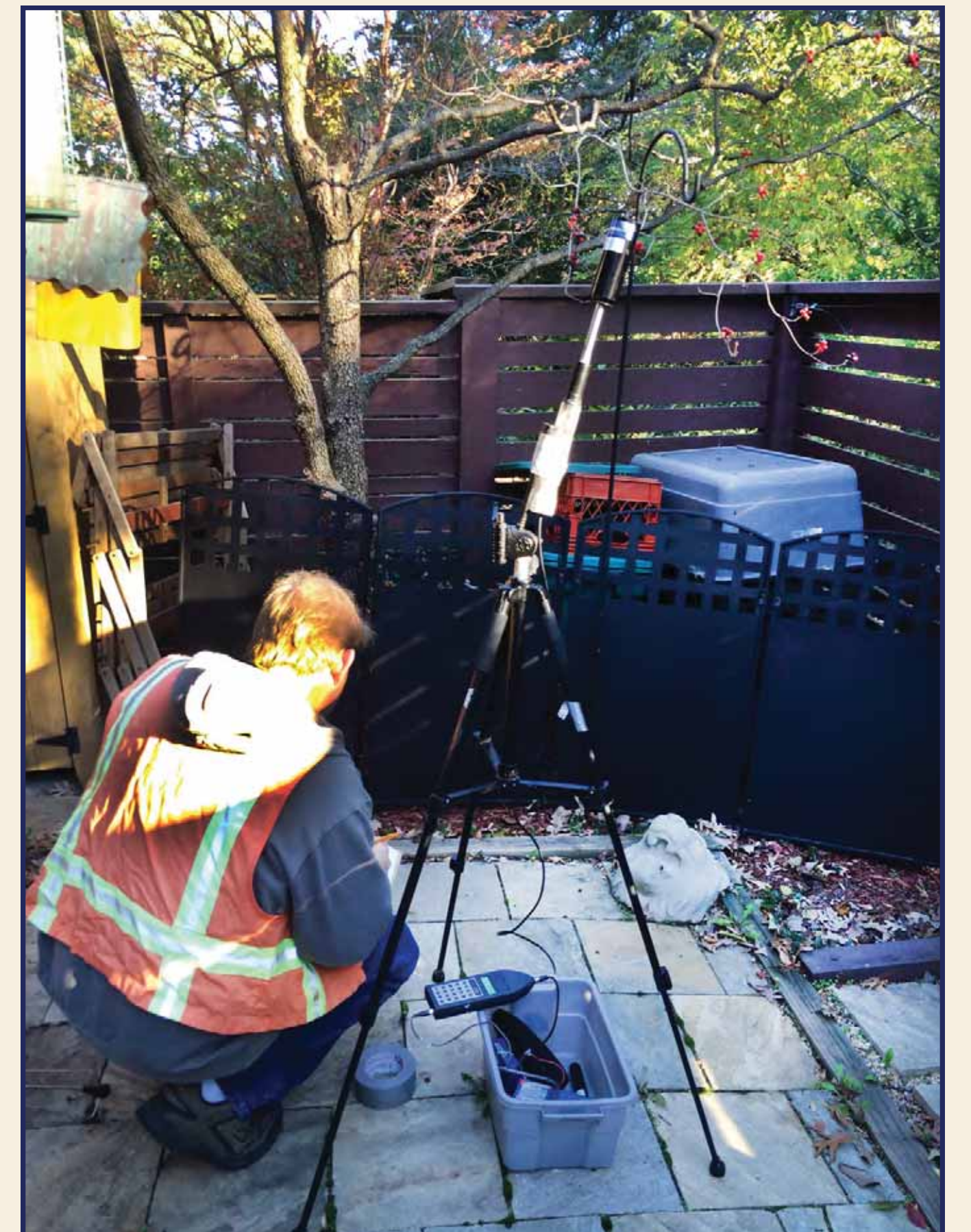
- Land Use and Development
- Impacts to Communities
- Historic and Archaeological Resources
- Parklands and Recreation Areas
- Streams and Wetlands
- Floodplains
- Threatened and Endangered Species
- Wildlife and Habitat
- Topography/Landscape
- Traffic Noise
- Water Quality
- Air Quality
- Hazardous Materials
- Cumulative Impacts
- Indirect Impacts



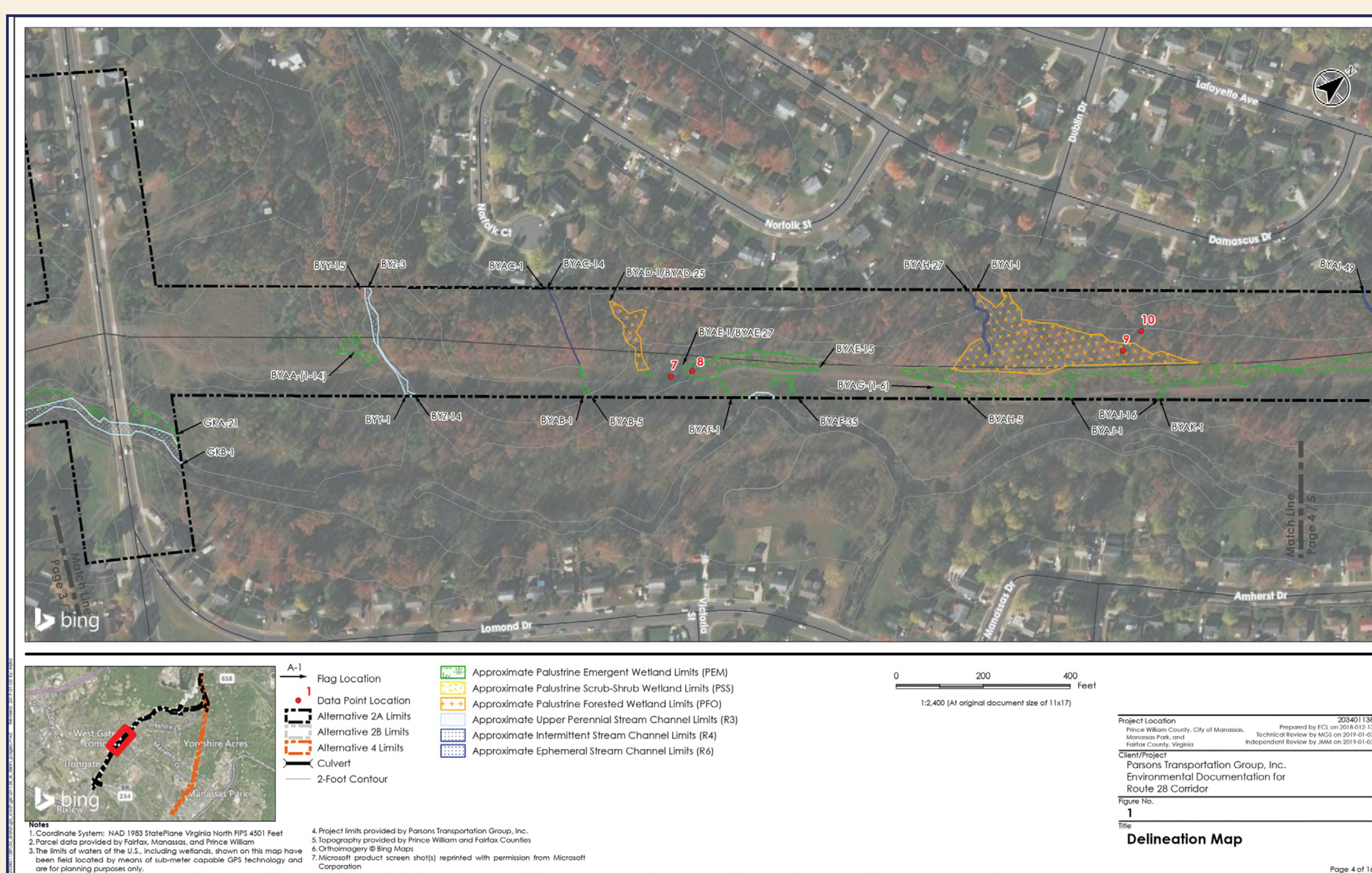
EA ACTIVITIES

The following activities have been completed or are currently underway:

- Surveys for threatened and endangered species and cultural resources
- Delineation of waters of the U.S. (streams and wetlands)
- Met with permitting agencies
- Initiated Section 106 consultation with Virginia Department of Historic Resources
 - Received input on identification of consulting parties
 - Submitted survey reports for review/concurrence
- Mailed property owner notification letters regarding field work
 - Noise monitoring
 - Threatened and endangered species surveys
 - Preliminary Jurisdictional Determination by US Army Corps of Engineers
- Finalized Traffic Technical Report
- Refined alternatives and drafted Alternatives Development Technical Memorandum
- Preparation of EA and Draft Section 4(f) Evaluation
- Met with Technical Advisory Committee



Noise Monitoring



Wetland and Stream Delineation

PROJECT SCHEDULE

MILESTONE	DATE
Project Scoping Public Meetings	Dec. 5 and 6, 2018
Data Collection	Ongoing
Alternatives Refinement / Public Information Meeting	Oct. 9, 2019
Environmental Assessment	Fall 2019
Public Hearing	TBD
Final Decision on the Environmental Assessment by FHWA	Spring 2020



NEXT STEPS

- Study team review of public comments.
- Confirmation of alternatives and assessment of environmental impacts.
- Continue to coordinate with US Army Corps of Engineers to facilitate a Least Environmentally Damaging Practicable Alternative (LEDPA) determination.
- Completion of Environmental Assessment (EA).
- Revision of EA, as appropriate, to reflect changes or new information resulting from comments received on the EA.

FOR PROJECT UPDATES

Please visit the project website, www.route28study.com





ROUTE 28 CORRIDOR ENVIRONMENTAL ASSESSMENT

PUBLIC COMMENTS

THANK YOU

Thank you for taking the time to review the materials presented at this public meeting. Your comments are valuable and greatly appreciated. Prince William County will carefully consider all comments received at this meeting and during the comment period.

Written comments must be postmarked or sent electronically **no later than October 25, 2019** and may be submitted in four ways:

AT THIS MEETING

Put written comments in the designated box.

BY MAIL

Department of Transportation
Prince William County
5 County Complex Court
Prince William, VA 22192

BY E-MAIL

info@route28study.com

ROUTE 28 CORRIDOR
ENVIRONMENTAL ASSESSMENT

PUBLIC INFORMATION MEETING

www.route28study.com

October 9, 2019, 6:30 - 8:30 PM
Yorkshire Elementary School
7610 Old Centreville Road
Manassas, VA 20111

All comments submitted will become a part of the public meeting summary and will be available to the public upon request.

Name: _____ Address: _____
(optional) (optional)

1. Do you have any comments on the alternatives presented tonight?

2. Are you aware of any human, cultural, or natural resources in the study area that should be considered in the Environmental Assessment? (Please circle YES or NO. If your answer is YES, please provide further details below.)
YES or NO

3. Additional comments:

Please leave your completed comment sheet at the designated location at the meeting; stamp and return by mail to the addressee on the reverse side; or scan and email to info@route28study.com by October 25, 2019.
Comments can also be submitted on the Get Involved page of the project website: www.route28study.com.

ON THE GET INVOLVED PAGE OF THE PROJECT WEBSITE

www.route28study.com

All comments submitted at this meeting and during the comment period will be incorporated in the meeting summary, which is subject to public review.

